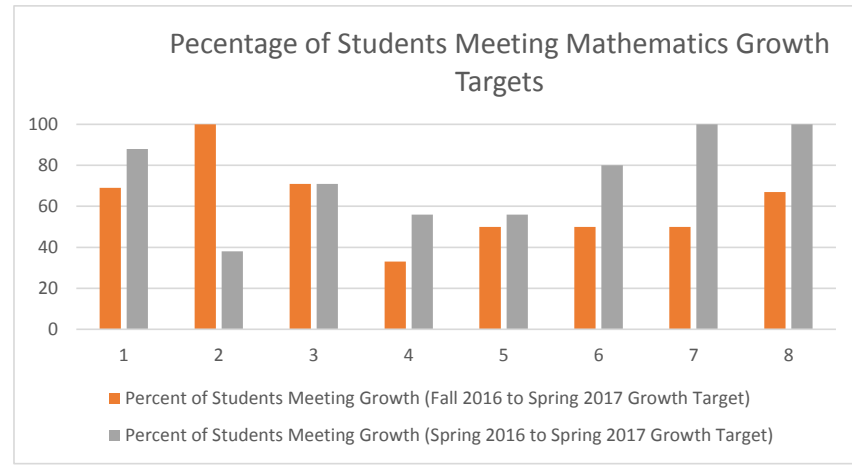
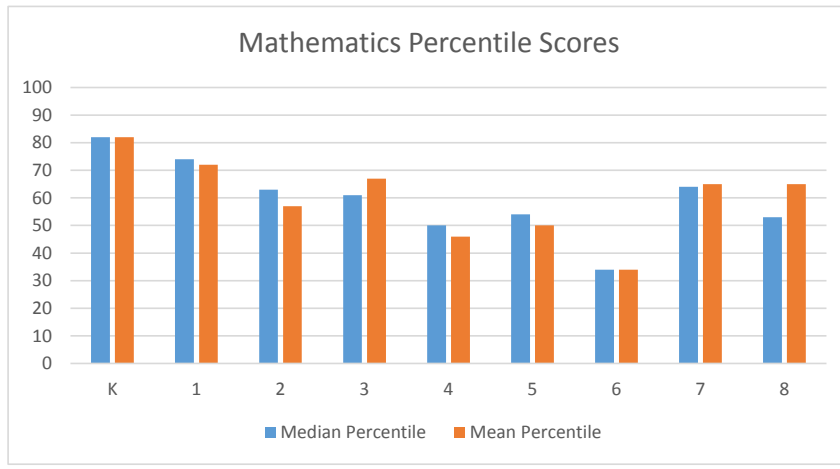


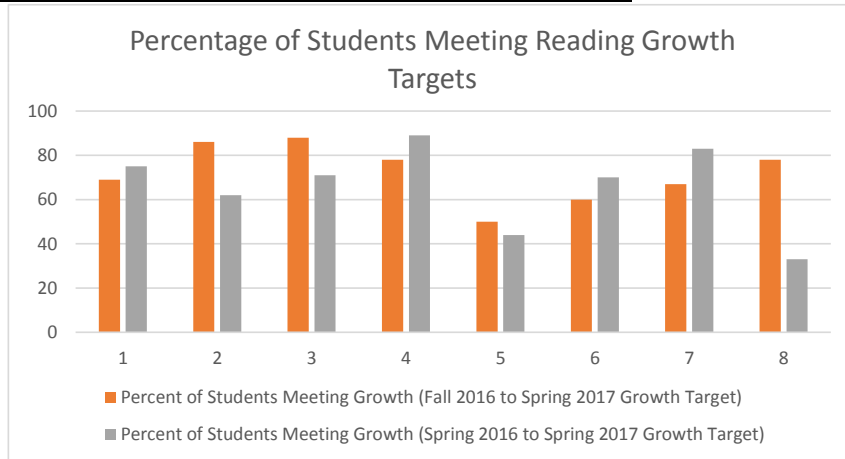
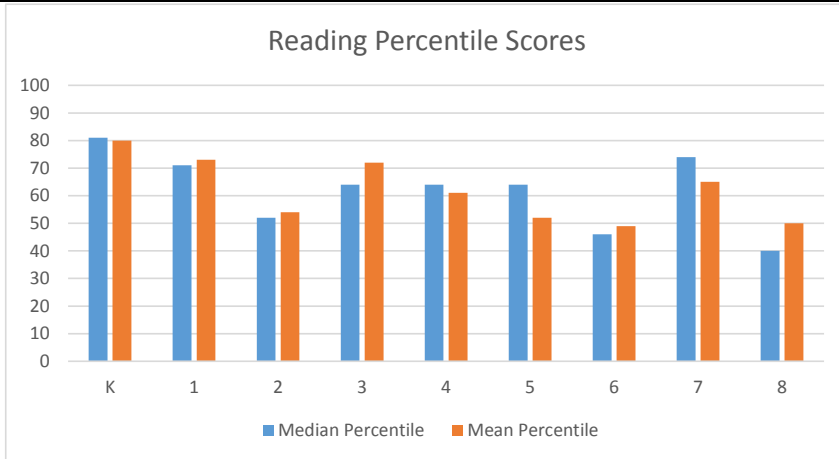
## Sacred Heart School 2017 Standardized Test Results

Mathematics	K	1	2	3	4	5	6	7	8	School
Students at or above grade level norm	9/9	14/16	10/14	6/7	5/9	6/12	2/10	5/6	5/9	67%
Median Percentile	82	74	63	61	50	54	34	64	53	X
Mean Percentile	82	72	57	67	46	50	34	65	65	X
Percent of Students Meeting Growth (Fall 2016 to Spring 2017 Growth Target)	X	69	100	71	33	50	50	50	67	X
Percent of Students Meeting Growth (Spring 2016 to Spring 2017 Growth Target)	X	88	38	71	56	56	80	100	100	X



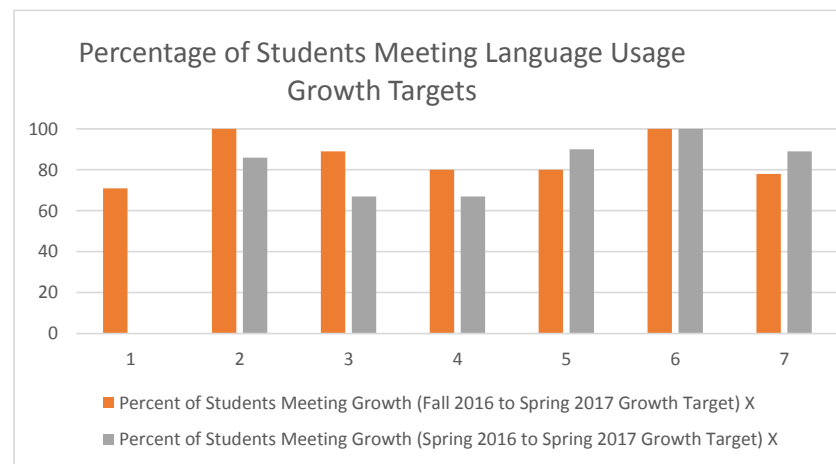
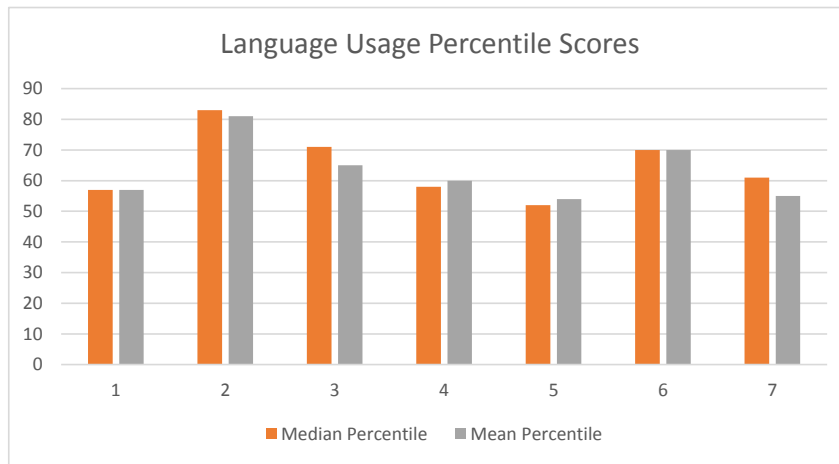
## Sacred Heart School 2017 Standardized Test Results

Reading	K	1	2	3	4	5	6	7	8	School
Students at or above grade level norm	9/9	13/16	8/14	6/7	6/9	8/12	5/10	5/6	4/9	70%
Median Percentile	81	71	52	64	64	64	46	74	40	X
Mean Percentile	80	73	54	72	61	52	49	65	50	X
Percent of Students Meeting Growth (Fall 2016 to Spring 2017 Growth Target)	X	69	86	88	78	50	60	67	78	X
Percent of Students Meeting Growth (Spring 2016 to Spring 2017 Growth Target)	X	75	62	71	89	44	70	83	33	X



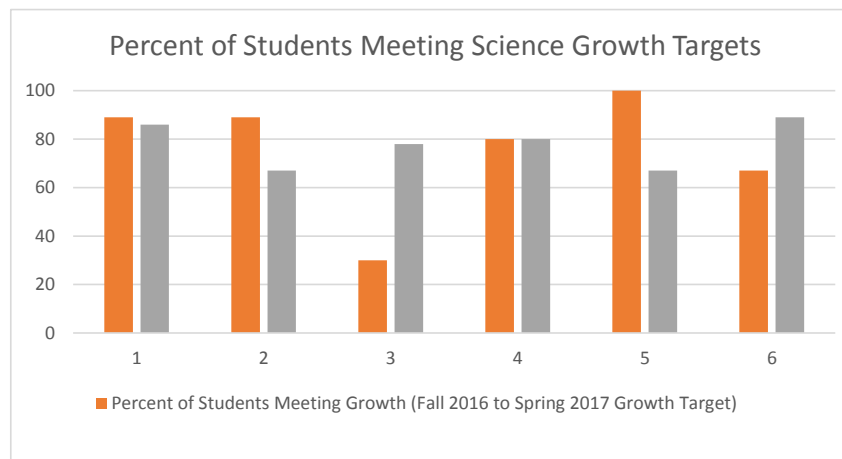
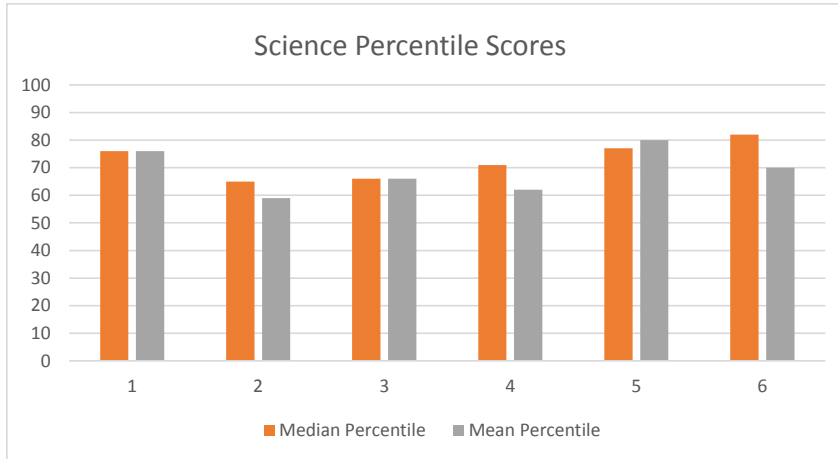
## Sacred Heart School 2017 Standardized Test Results

Language Usage	K	1	2	3	4	5	6	7	8	School
Students at or above grade level norm	X	X	9/14	7/7	5/9	8/12	6/10	5/6	6/9	69%
Median Percentile	X	X	57	83	71	58	52	70	61	X
Mean Percentile	X	X	57	81	65	60	54	70	55	X
Percent of Students Meeting Growth (Fall 2016 to Spring 2017 Growth Target)	X	X	71	100	89	80	80	100	78	X
Percent of Students Meeting Growth (Spring 2016 to Spring 2017 Growth Target)	X	X	X	86	67	67	90	100	89	X



## Sacred Heart School 2017 Standardized Test Results

Science	K	1	2	3	4	5	6	7	8	School
Students at or above grade level norm	X	X	X	7/7	7/9	9/12	7/10	6/6	7/9	81%
Median Percentile	X	X	X	76	65	66	71	77	82	X
Mean Percentile	X	X	X	76	59	66	62	80	70	X
Percent of Students Meeting Growth (Fall 2016 to Spring 2017 Growth Target)	X	X	X	89	89	30	80	100	67	X
Percent of Students Meeting Growth (Spring 2016 to Spring 2017 Growth Target)	X	X	X	86	67	78	80	67	89	X



## Sacred Heart School 2017 Standardized Test Results

### What Does This Mean?

**Percentile:** In very basic terms, if 100 students took the test, the 50<sup>th</sup> percentile means that the child scored better than half the group and less than half the group. In the case of NWEA tests, the group is students that age nation-wide.

**Students at or above grade level norm:** This gives the number of students who scored at the 50<sup>th</sup> percentile or higher on the NWEA test. The 50<sup>th</sup> percentile is considered the “norm” for a grade level.

**School:** This number is the percent of students at Sacred Heart School who scored at or above the 50<sup>th</sup> percentile on that test.

**Median Percentile:** This looks at the students in the class. If we order the scores from least to greatest, the median percentile is the number in the middle and tells us where the “average” students from that class fall.

**Mean Percentile:** This is the average percentile score on the test.

**Percent of Students Meeting Growth:** This is the percentage of students in each class who met their personal growth goals. Our goals at Sacred Heart are to ensure that all students are growing and learning. NWEA assigns each student a growth goal. They determine this goal by measuring how other students who scored that score at that age grew.

### Where do we go from here?

The teachers at Sacred Heart use this data to determine the learning needs of classes and individual students. We know that all students grow at different rates and we are dedicated to meeting the needs of each individual learner. The NWEA test is only one of many tools that we use to measure student and class progress and determine future instructional goals.